

Walnut Farm, The Causeway, Mark

Guide Price £925,000

🛏 5 🍷 4 🛋 4



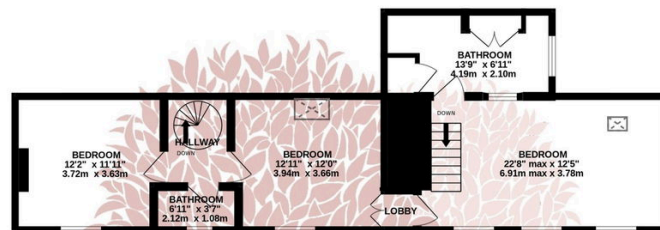
A HIGHLY DISTINGUISHED AND IMMACULATELY PRESENTED five-bedroom character cottage and in a superb location in the prominent village of Mark.



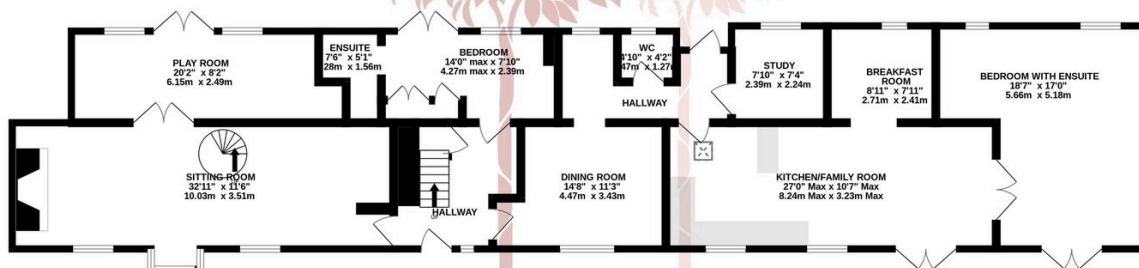
Key Features

- Large five bedroom cottage with exceptional proportions
- Three ensuite bedrooms
- Brilliantly restored with lots of original character features
- Outbuilding and log store
- Off street parking
- Four reception rooms
- Spacious kitchen/family room
- Separate study
- Gorgeous private gardens and secluded seating areas
- EPC rating E

1ST FLOOR
647 sq.ft. (60.1 sq.m.) approx.



GROUND FLOOR
1594 sq.ft. (148.1 sq.m.) approx.



TOTAL FLOOR AREA : 2241 sq.ft. (208.2 sq.m.) approx.

Whilst every attempt has been made to ensure the accuracy of the floorplan contained here, measurements of doors, windows, rooms and any other items are approximate and no responsibility is taken for any error, omission or mis-statement. This plan is for illustrative purposes only and should be used as such by any prospective purchaser. The services, systems and appliances shown have not been tested and no guarantee as to their operability or efficiency can be given.

Made with Metropix ©2024

